



Noble Apex Homes Ltd.  
御峰置業有限公司

# 墨爾本 M Docklands

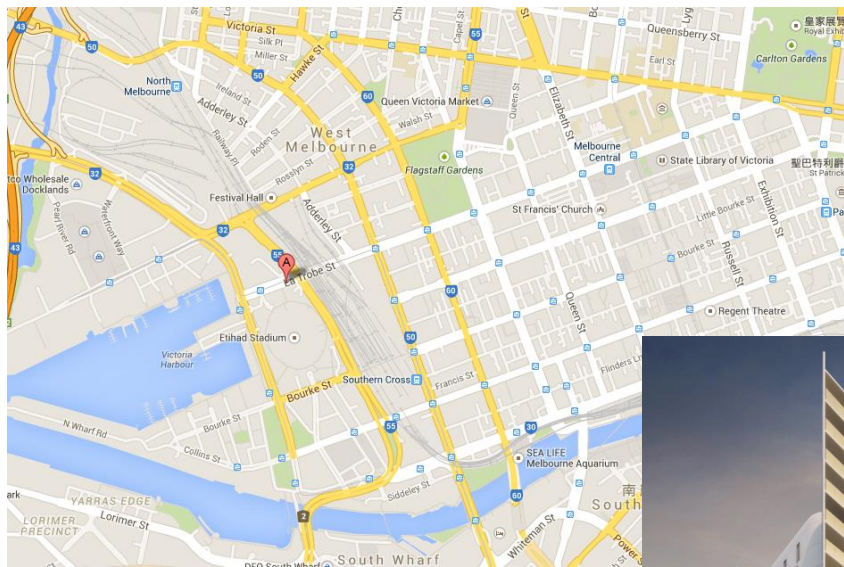
地址: 677 La Trobe Street

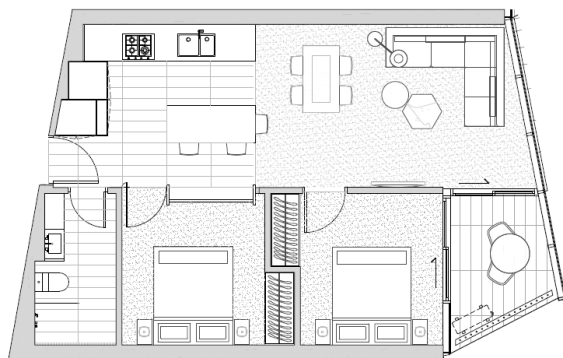
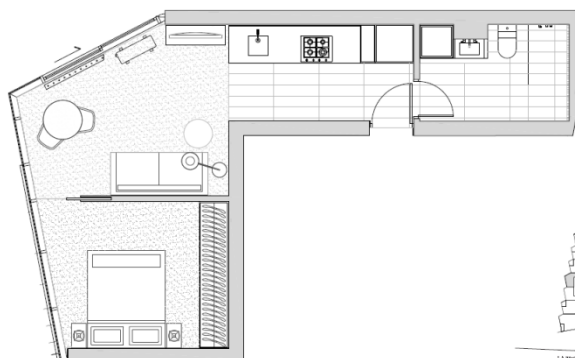
地區: Docklands

預計落成日期: 2016

房型: 1房(內園)及2房(海景)

售價: A\$413,000 1房 只剩2個  
A\$592,000 2房 只餘最後1個





一房罕有  
大折扣

詳情請與御峰置業  
聯絡:22301001

\* Subject to the terms, please visit Exhibition for the details. Price and details correct at time of going to press. Where the completion season stated it is an indicative period. We reserve the right for the alternation of materials. Purchasers should satisfy themselves with the long stop date as detailed in the legal contract. Our sales representatives for overseas property work exclusively in relation to properties outside Hong Kong and are not therefore licensed under the Estate Agents Ordinance to deal with Hong Kong properties.

The following information contained in this advert is from the sources we believe to be reliable. However, we have not verified its accuracy and make no guarantee, warranty or representative about it. It is submitted herein subject to the possibility of errors, omissions, and changes without notice. No liability is accepted whatsoever for any direct, indirect or consequential loss arising from the use of this publication. The market information provided in this publication is not and should not be construed as an offer to sell or the solicitation of an offer to purchase any landed property and, accordingly, do not have any legal binding effect whatsoever on our company and/ or its clients. The above property/project is not classified as collective investment scheme.

This advert contains pictures/graphics which may be modified by computer, and these pictures/graphics are provided for reference only.